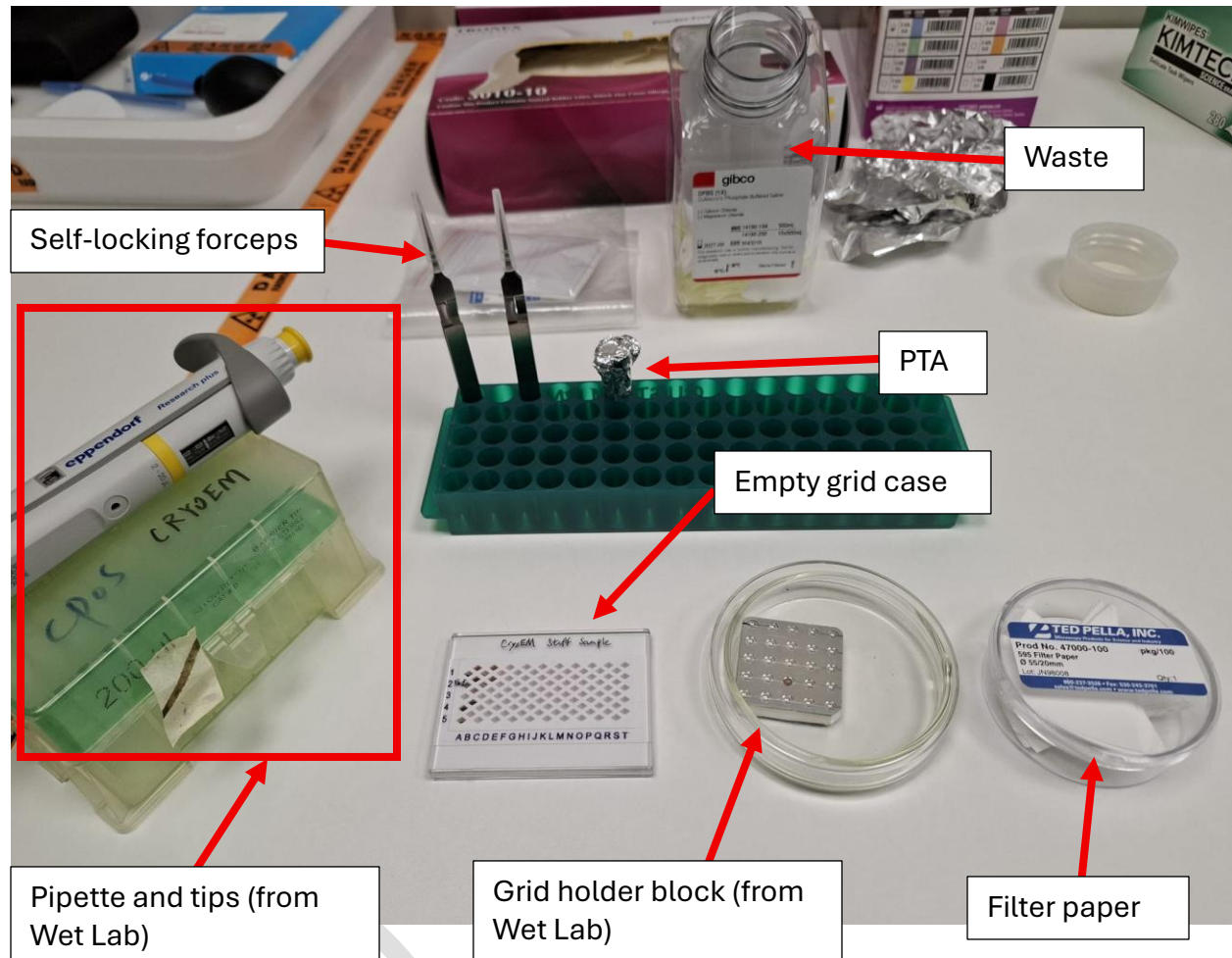


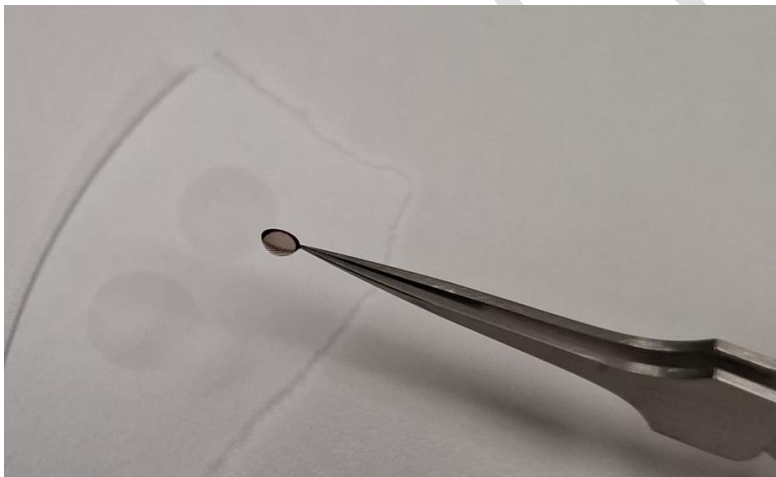
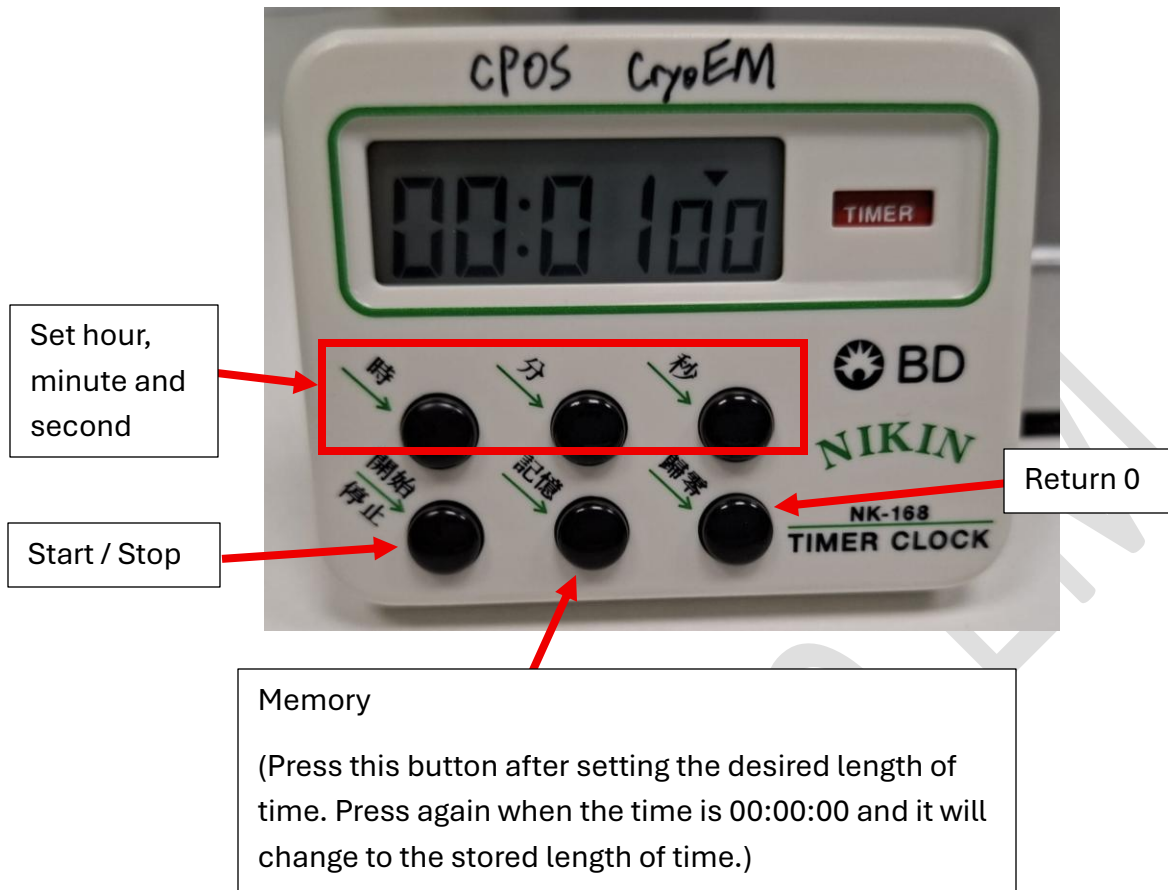
PTA Negative Staining SOP



1. Take the pipette, tips, and grid holder block from the Wet Lab. Place the required number of continuous carbon grids onto the grid holder block for glow discharge.
2. Discharge your grids using easiGlow or Solarus II.

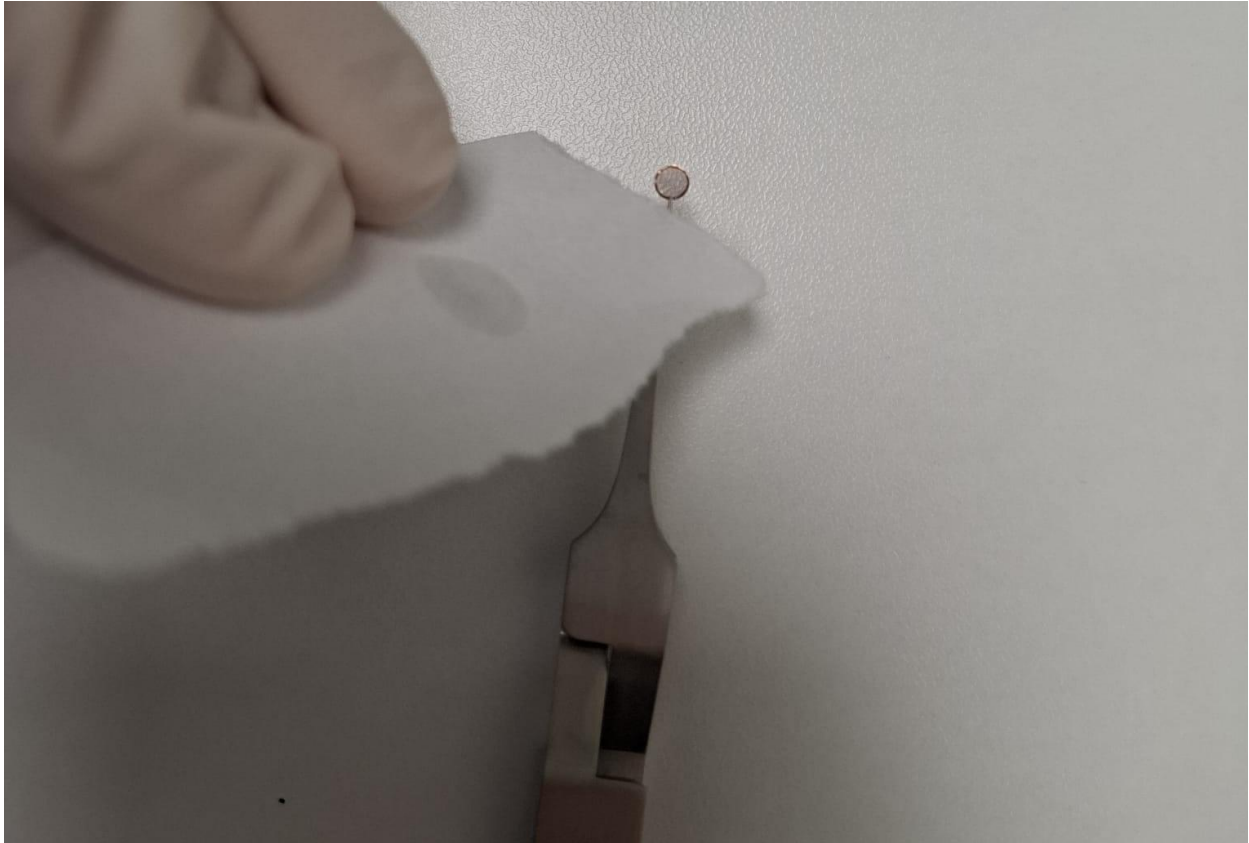


3. Using self-locking forceps, pick up a grid from the grid holder block. Add **4 μ L** of the **sample** onto the grid and incubate for **1 minute at room temperature**.



- Carefully blot the excess sample solution with filter paper. **Critical: Leave a thin film of liquid on the grid and do not let the grid become fully dry.**
- Add **4 μL of PTA** onto the grid and immediately blot the excess solution with filter paper.
- Add another **4 μL of PTA** and wait for **1 minute**. Carefully blot the excess solution using filter paper.

7. Add a final **4 μL of PTA**, wait for **1 minute**, and then carefully blot the excess solution with filter paper.



8. Gently remove residual solution at the tip of the forceps by blotting with the edge of the filter paper.

CPOS



9. Allow the grid to dry before placing it on the sample holder. Alternatively, store the grid in an empty grid case.