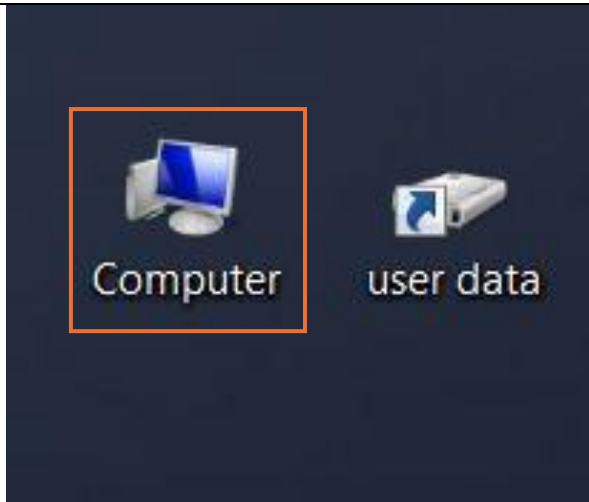
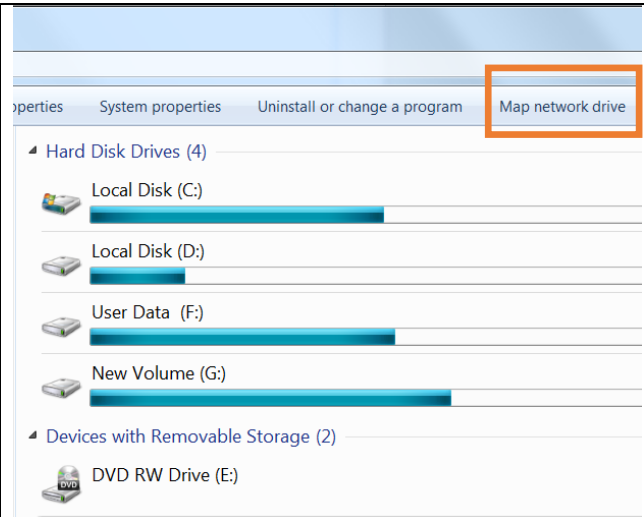


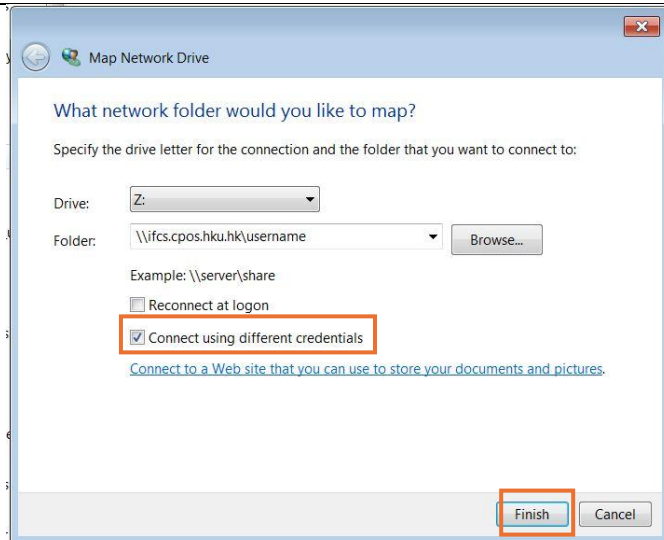
CPOS IFC SERVER CONNECTION AND DATA EXPORT (WINDOWS 7)



1) Click **Computer**



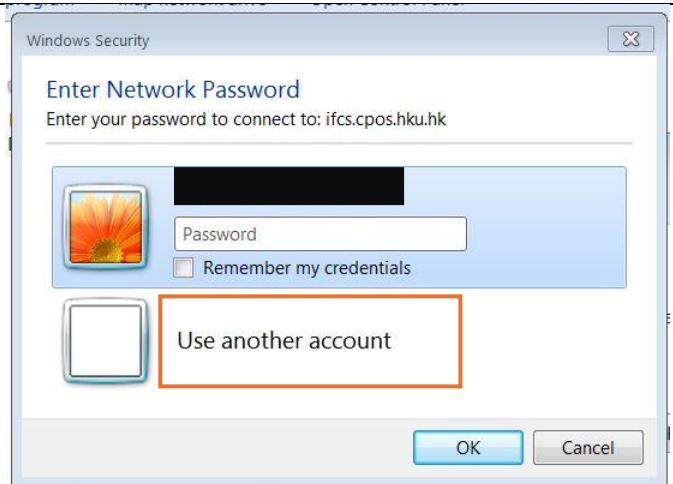
2) Click **Map network drive**



3) Type **\\ifcs.cpos.hku.hk\user name**

Tick **Connect using different credentials**

Click **Finish**

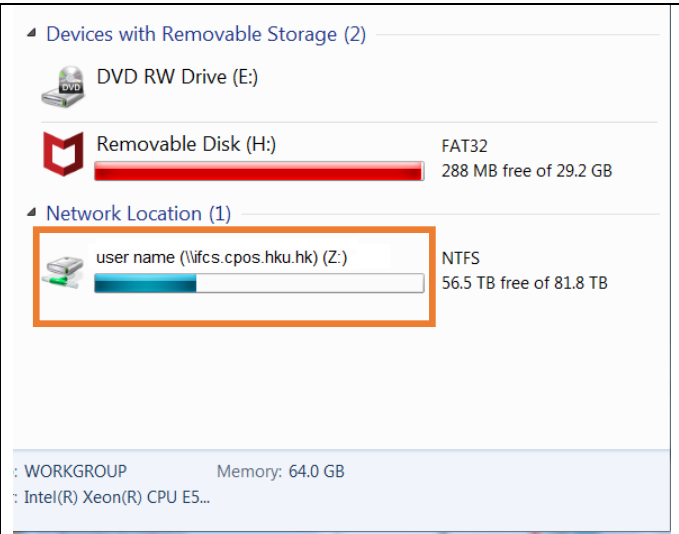


4) Click **Use another account**

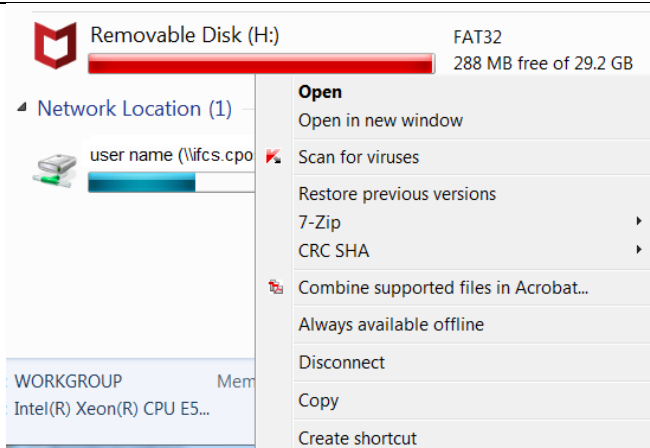
CPOS IFC SERVER CONNECTION AND DATA EXPORT (WINDOWS 7)



5) Enter registered **User name** and **password** in other users then click **OK**



6) Your **personal network drive** is mapped to the computer. **Upload** your data from local drive to the network drive by copy and paste. OR **Download** your data from network drive to local drive by copy and paste.



7) Right Click network drive at Computer then click **Disconnect**.